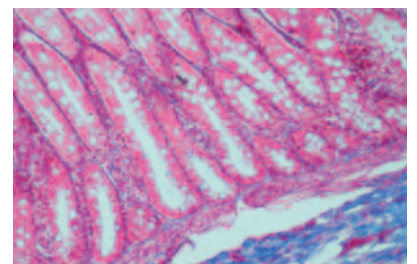
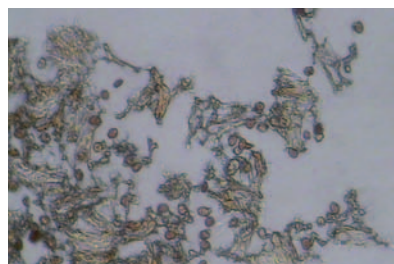
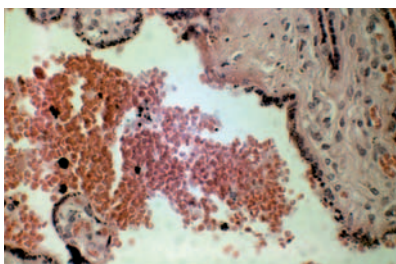


Med-Prax

The Microscope for Biological Laboratories and Education



**Save Investments-Products “Made in Germany”
with Expert Consultancy**

The Med-Prax microscope is the ideal instrument for routine investigations of biological samples in medicine and education thanks to its related features for these applications.

- **Easy Operation of Brightfield Imaging**
- **Ergonomic Operation**
- **Optimal Images through Illumination System**
- **High Stability and Durability**
- **Quality “Made in Germany”**

Stability & Ergonomics



Stable Stand

- The heavy solid cast stand ensures stable and reproducible microscopy results

Ergonomic Tube

- The binocular tube can be turned by 360° without loosening a screw. By this two persons can easily share one microscope. The viewing angle is 45°.
- Each eyepiece tube is individually adjustable according to the user's needs. The interpupillary distance is variable from 55 mm to 75 mm.



Adjustable Friction of Focus Drive

- The microscope has a coaxial coarse and fine focusing drive for the optimal adjustment of the focus.
- The friction of the focusing drive is individually adjustable by the ring behind the focus drive.



Comfortable Position of Brightness Control

- The brightness control element is in a comfortable position close to the focusing drive. This supports ergonomic operation of the microscope

High Performance Optical System

Wide Range of Magnifications

- The standard microscope is equipped with following achromatic objectives:
 - A 4/0,10
 - A 10/0,25
 - A 40/0,65 spring loaded
 - A 100/1,25 Oil spring loaded
- Plan achromatic objectives are available as alternative.



Optimal Illumination System

- Homogenous illumination and optimal brightness are achieved through an Abbecondenser with high numerical aperture of 1,25, aperture diaphragm and pre-adjusted Köhler illumination
- The height adjustment of the condenser is carried out by a robust lever mechanism
- The integrated 6 V / 20 W halogen lamp ensures a continuously adjustable brightness.



Natural Light

- A daylight filter, which is integrated in the illumination tube, guarantees bright and clear images by providing natural light.



Eyepieces adjustable and securable

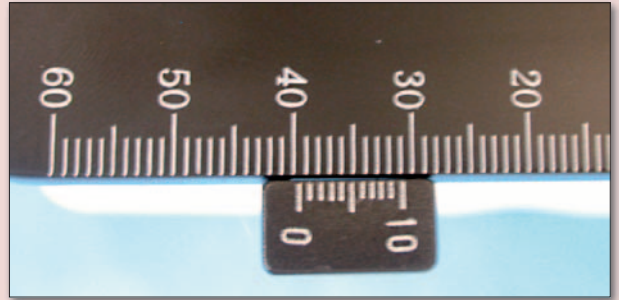
- Widefield eyepieces WF 10x/18 with individual adjustment of each eyepiece are standard
- They can be secured to prevent removal without tools. This is a useful feature especially in an educational environment.



Optimal Specimen Handling

Robust and Comfortable Stage

- The microscope is equipped with a mechanical stage 130 mm x 130 mm for comfortable investigation of standard specimen.
- The adjustment range for the specimen is 50 mm x 78 mm. The Vernier scales in X- and Y- make it easy to find back interesting details of the specimen.



Secure Holding of Specimen

- A specimen holder with spring lever guarantees a secure and careful holding of a specimen. This prevents damaging the specimen.



Easy Maintenance

Low Need for Maintenance

- Low maintenance is needed due to the use of high quality material and applying best manufacturing practice.

Easy Lamp Exchange

- With a few grips the lamp can be exchanged easily without the need of tools.



Helmut Hund GmbH
Wilhelm-Will-Straße 7
D-35580 Wetzlar, Germany
Tel. +49 (0) 6441 2004-0
Fax +49 (0) 6441 2004-44
info@hund.de
www.hund.de

hund
WETZLAR