

We bring technologies together.

hund
WETZLAR



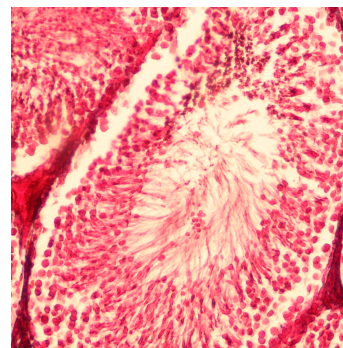
Laboratory microscope H 600

**The modular laboratory microscope for
medical practices and clinical laboratories**

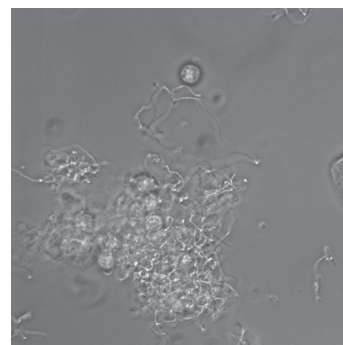
Laboratory microscope H 600



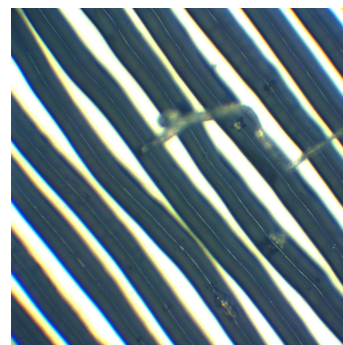
The modular laboratory microscope for medical practices and clinical laboratories.



Tissue section, brightfield



Urinary sediment, phase contrast



Vinyl record, incident-light brightfield

One system – flexible solutions

A wide range of accessories allows the H 600 to be adapted to your specific task. The modular system makes it possible to install a combination of different contrasting techniques in one microscope. And finally, the IVD marking guarantees high diagnostic reliability in medical applications.

A competent and experienced team of experts is available to advise you on the configuration of your H 600. From the required contrasting technique to illumination geometry, from optical configuration to digital documentation – everything from a single source!

Advantages:

- Bright 30 W halogen or white-light LED illumination, with alignment according to Köhler
- Combination condensers NA0.9 or NA1.25 for phase contrast or darkfield
- High-resolution dark field cardioid condenser NA1.4
- Flexible incident-light fluorescence for different and customer-specific filter sets
- Own UV LED fluorescence solution for the detection of mycoses

Examples for application-specific configurations

Hematology, pathology, bacteriology: H 600 Wilo-Prax PL

For brightfield examinations of high-contrast, usually stained specimens such as tissue sections or smears. With planachromatic objectives 4/0.10, 10/0.25, 40/0.65, 100/1.25 Oil and condenser NA0.9.

Hematology, urology, gynaecology, dermatology: H 600 Wilozyt Plan

Optimal image contrast for the examination of low-contrast, unstained specimens such as urinary sediments, bacteria, or cells. With planachromatic objectives 10/0.25, Ph2 20/0.40, Ph3 40/0.65, 100/1.25 Oil and combination condenser NA1.25 for easy switching between brightfield and phase contrast.

Dermatology, gynaecology: H 600 LED-AFL Myko

With planachromatic lenses 20/0.40 and 40/0.65. The incident light fluorescence illuminator is designed to suit the fluorochrome Mykoval which allows a very specific detection of fungal elements (mycoses) and yeasts.

Live-blood analysis: H 600 HP LED

Brilliant darkfield with cardioid condenser NA1.4 in combination with high-power LED illumination and objective SPL 100/1.25 – 0.60 Oil with iris diaphragm to detect even the finest details.

Technical data

	Spezifikationen H 600
Stand	Stable metal-cast stand
Eyepieces	WF 10x/18 (version available for spectacle wearers) WF 10x/20 WF 12.5x/18 (version available for spectacle wearers) WF 15x/17
Observation tube	Binocular Trinocular (30/70 or 100/100)
Camera adapter	C-Mount 0.5x (for cameras with 1/2" sensor) C-Mount 1x (for cameras with 1" sensor)
Nosepiece	Quintuple, with ball bearing, tilted backwards
Objectives	Transmitted-light planachromatic brightfield objectives 4 / 10 / 20 / 40 / 100 Oil Transmitted-light planachromatic phase contrast objectives 10 / 20 / 40 / 100 Oil Transmitted-light semi-planachromatic objective SPL 100/I.25-0.60 Oil with iris diaphragm for darkfield examinations Objective FL 50/I.0 Oil for incident-light fluorescence or high-resolution transmitted-light brightfield examinations Incident-light achromatic objectives 4 / 10 / 20 / 40
Mechanical stage	Size 159 mm x 129 mm, travel range 76 mm x 52 mm Object guide with spring lever for up to two specimens Coaxial stage drive on the right Vernier scales for both axes
Focusing drive	Coaxial coarse and fine focusing drives Travel range coarse focusing drive: 22 mm Resolution fine focusing drive: 0.002 mm Travel range limited by safety clutches
Condensers	Brightfield condensers NA0.9 or NA1.25 Combination condensers NA 0.9 or 1.25 with 3 or 5 positions Cardioid darkfield condenser NA1.4
Illumination (transmitted-light)	White-light LED 3 W Halogen 30 W
Illumination (incident-light)	Halogen 50 W (with incident-light illuminator) HBO 50 W / 100 W (with incident-light fluorescence illuminator and filter slider) UV LED (incident-light LED illuminator with filter set for Mykval)
Supply voltage	230 V AC, 50 ... 60 Hz or 115 V AC, 50... 60 Hz (with internal halogen illumination); 90 ... 264 V AC, 47 ... 63 Hz, out: 18 V / 1 A (with internal LED lighting)
Accessories	Light filters Polarising set HP II Auxiliary microscope for phase contrast
Technical data subject to changes.	

Helmut Hund GmbH

Artur-Herzog-Straße 2
D-35580 Wetzlar, Germany
Tel. +49 (0) 6441 2004-0
Fax +49 (0) 6441 2004-44

info@hund.de
www.hund.de

hund
WETZLAR